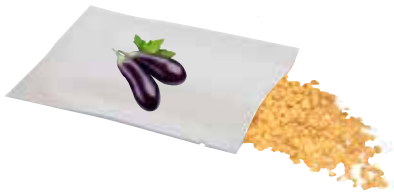


# Bilinganya

## Mwongozo

Halali kutumika 2017

### Uchaguzi wa mbegu na aina ya bilinganya



- Mavuno mengi
- Ustahimilivu wa magonjwa
- Matunda yenye ubora wa juu
- Inakubalika sokoni

### Ukuzaji miche

#### 1 Ujazaji udongo kwenye trei

1a Changanya vizuri udongo kwa uwiano ufuatao



Kipimo 1 udongo wa msituni/juu



Vipimo 2 mbolea ya samadi



Kipimo 1 mchanga

1b Choma udongo wa kuoteshea mbegu kwa nyuzi 80 za sentigradi kwa dakika 30-40

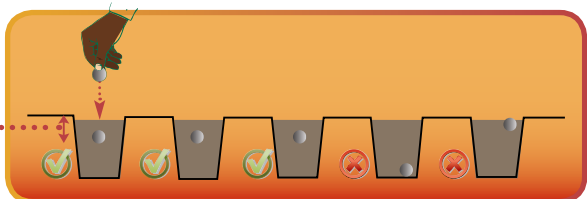


1c Jaza trei kwa udongo uliochanganywa vizuri

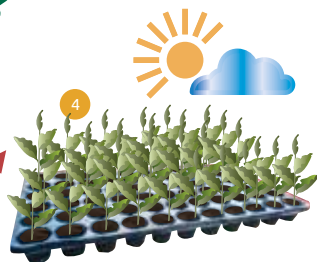
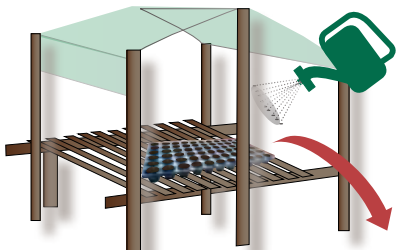


#### 2 Kina cha kusia mbegu

Kina cha kusia mbegu = ukubwa wa mbegu 2



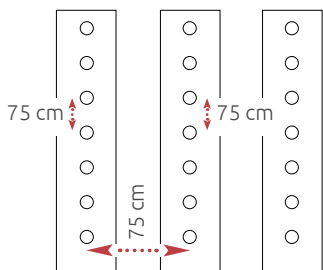
3 Uhudumiaji / utunzaji miche



4 Kuandaa miche kuzoea mazingira ya shambani  
Weka miche nje kwa wiki 1 kabla ya kuotesha shambani

## Uandaaji wa shamba na nafasi kati ya mimea

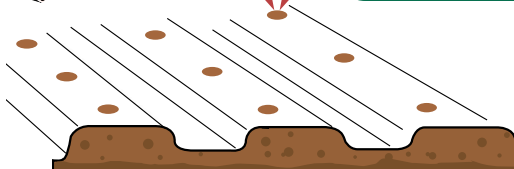
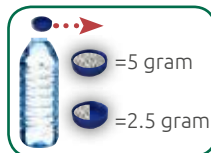
### Nafasi kati ya mimea



Mimea 7,100 kwa ekari

### Mbolea ya kupandia

- Mbolea ya samadi/asili (kama ipo)



## Kuotesha miche shambani

### Otesha miche shambani wakati wa jioni

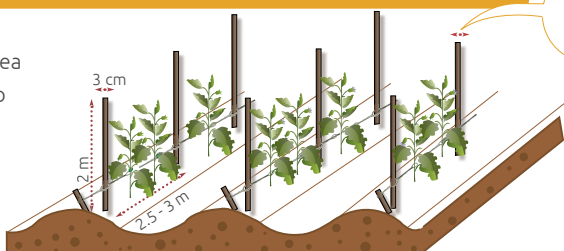


Wiki 3-4 baada ya kusia/kuotesha mbegu



## Kuegemeza/ kushikiza mimea kwenye miti

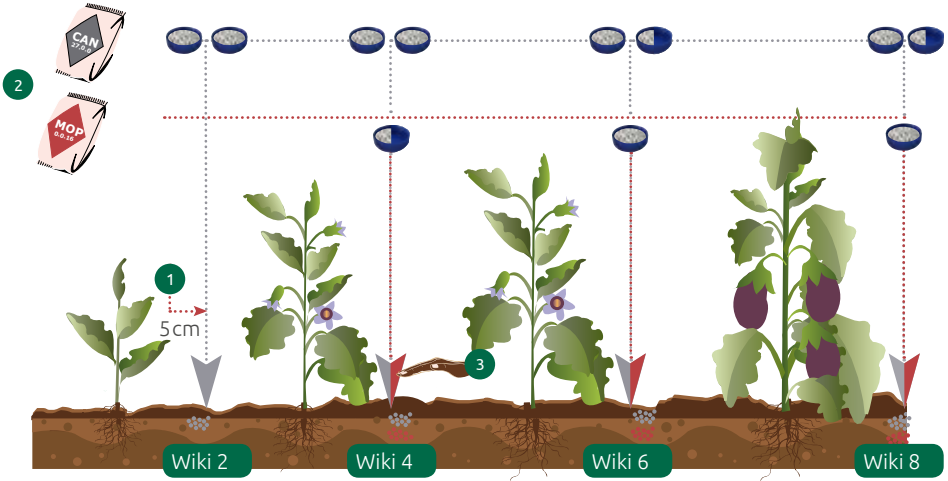
- Husaidia kushikiza mimea
- Ni rahisi kuhudumia zao
- Hupunguza magonjwa



Wiki 1-2 baada ya kuotesha miche shambani

## Uwekaji mbolea

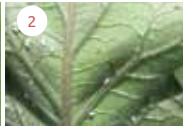
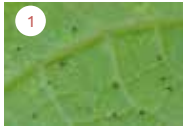
- 1 Tengeneza shimo dogo, sentimita 5 kutoka usawa wa majani ya kila mmea kwa ajili ya uwekaji mbolea
- 2 Weka mbolea
- 3 Funika shimo lenye mbolea



Kiwango cha mbolea kimezingatia idadi ya mimea 7,100 kwa ekari

## Kinga ya mazao

Kiuatilifu wadudu



Kiambato amilifu/dhamana

Utitiri (1)

Inzi weupe (2)

Kimamba (3)

Chawa (4)

Imidacloprid



Lambda-cyhalothrin



Abamectin



Dicofol



Thiocylam oxalate



Profenofos

= Kiuatilifu kilichoshauriwa kwa ajili ya wadudu sumbufu wa zao.

Badili aina za viambato amilifu/sumu ili kuzuia uwezekano wa kujenga usugu wa viuatilifu.

## Kinga ya mazao

### Kiuatilifu kuvu/ Ukungu

Kiambato amilifu /Dhamana	Ufanisi	Udhibiti/kudhibiti
Difenoconazole	Kinga/kuzuia + Tiba/Kutibu	Kutu
Copper oxychloride	Kinga/kuzuia	Bakteria madoajani
Chlorothalonil	Kinga/kuzuia	Wigo mpana wa kinga/tiba
Azoxystrobin	Kinga/kuzuia	Bakajani wahi 5
Propamocarb	Kinga/kuzuia + Tiba/Kutibu	Kuza kiuno/shina
Difenoconazole	Kinga/kuzuia + Tiba/Kutibu	Kutu/ Bakajani wahi
Sulphur	Kinga/kuzuia	Ubwiri unga
Dimethomorph+mancozeb	Kinga/kuzuia + Tiba/Kutibu	Bakajani Chelewa 6
Copperoxychloride + cymoxanil	Kinga/kuzuia + Tiba/Kutibu	Bakajani Chelewa
Mancozeb+cymoxanil	Kinga/kuzuia + Tiba/Kutibu	Bakajani Chelewa



### Uwezekano wa hatari ya maambukizi kwa bakajani chelewa

Ukuaji wa mmea	Hali ya jua	Hali ya mvua
Taratibu	Kidogo	Wastani
Haraka	Wastani	Kubwa

**Kidogo:** Jua kidogo: Nyunyiza kiuatilifu cha ukungu cha kukinga kila baada ya siku 5-7

**Wastani:** Jua na mvua wastani: Nyunyiza kiuatilifu cha ukungu cha kukinga kila baada ya siku 5 na ikiwezekana pia kiuatilifu ukungu cha kutibu

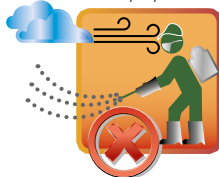
**Kubwa:** Mvua kubwa: Nyunyiza kiuatilifu cha ukungu cha kukinga kila baada ya siku 5 chenye kiuatilifu ukungu cha kutibu

### Mbinu za unyunyizaji viuatilifu

Vaa mavazi ya kukinga mwili



Hali ya hewa ya upepo



Hali ya hewa nzuri



Hali ya hewa ya mvua



Nozeli nzuri



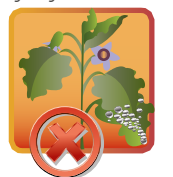
Nozeli inayovuja



Nawa mikono baada ya kunyunyiza kiuatilifu



Kuwa mwangalifu kunyunyiza kemikali zaidi



### Unahitaji taarifa zaidi?

Tafadhali piga +255 685 942 364

SEVIA | S.L.P. 7211 | Moshi

Anuani | Lambo Mferejini | Hai |

[www.sevia.biz](http://www.sevia.biz)

